



Fondation Eagle and PEAS: 8 years of partnership



March 2019



Table of Contents

Who are PEAS?.....	3
PEAS in Uganda	4
PEAS in Zambia.....	5
Fondation Eagle and PEAS	6
Dormitories	8
Classroom block	8
Kitchen	9
Teacher Housing	9
Security Fence.....	10
Lightning conductors.....	10
Results.....	11
Thank you.....	12
Appendix A: PEAS schools supported by Fondation Eagle	13

Executive Summary

Fondation Eagle has been generously supporting PEAS for the past 8 years, contributing to the continuous improvement of our school and to the expansion of quality and affordable secondary education provision to thousands of children in Uganda. We are delighted to have the opportunity to share this progress report with you, where you will be able to learn more about how the support received by Fondation Eagle has enabled PEAS to transform the lives of some of the most underprivileged children in Uganda and Zambia.



Who are PEAS?

PEAS' vision is a world where all children enjoy **an education that unlocks their full potential**. We build and run high quality, sustainably delivered secondary schools in some of Uganda and Zambia's most underprivileged rural communities.

There is a severe lack of affordable secondary schools across Sub-Saharan Africa which sees millions of children reach the end of primary school with no place to continue their education; three in four children in Uganda, and two in three children in Zambia, are **unable to get a quality secondary education**. There is also a gaping lack of equity in access to education - schools that do exist charge high fees, excluding many underprivileged families, and disadvantaged groups such as girls or those with special educational needs face even more barriers.



For those lucky enough to go to secondary school, too often the system is failing to deliver the rich, relevant education they so desperately need. Students can spend years in a classroom, but due to poor quality teaching and badly-run schools, they walk away without even functional literacy or numeracy - let alone the essential skills and knowledge they need to lead fulfilling and socially responsible lives. This is a tragedy - for the students themselves, the families who gave up so much to send them to school, and for the communities that will rely on their youth to build thriving societies for decades to come.

Research has shown that a quality secondary education has the power to transform lives:

- In Uganda, those with secondary education **earn 73% more** than those with primary education;
- Educating girls has been identified as the **sixth most effective solution to reducing global warming**;
- A child with secondary education is **three times less likely to become HIV positive**; and
- Children of mothers with secondary education are **twice as likely to survive** beyond age five.

Established in 2008, PEAS is a UK charity and social enterprise that is now one of the largest and fastest-growing low-cost secondary school networks in Sub-Saharan Africa. We have built **32 schools** from scratch (28 in Uganda, four in Zambia) and are currently **educating over 16,000 children**. Many of these children would not have had anywhere else to continue their education after the age of 11.

PEAS schools have local leadership, staff and management - around 800 teachers and support staff in Uganda and Zambia. Whilst we fundraise for the costs of building and expanding infrastructure, once schools have launched, they **run completely independent of philanthropic donations** - their running costs are covered through partnerships with the government and the lowest possible fees we can charge. Our newest schools have opened offering **free day school education** - which is unheard of in Zambia.

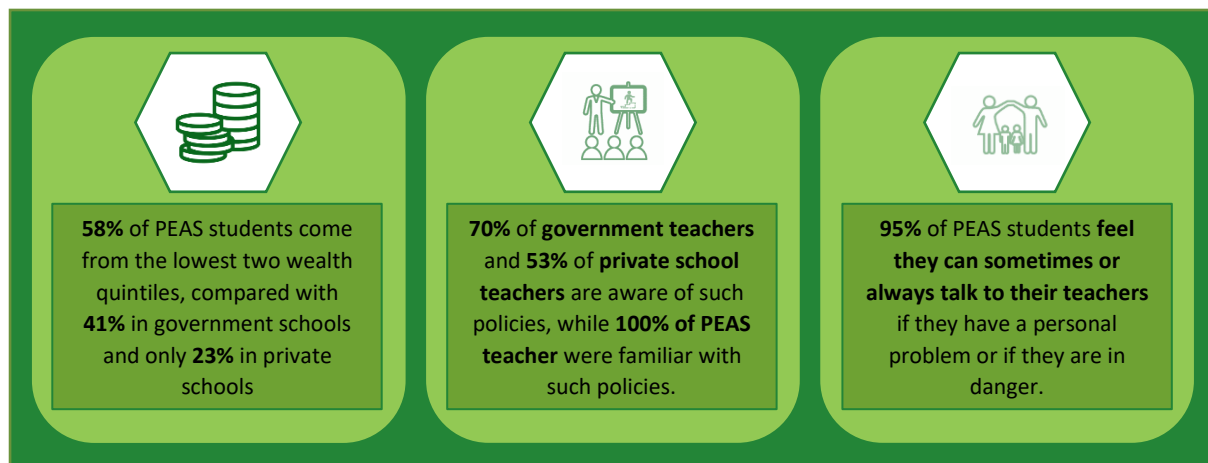


PEAS in Uganda

The first PEAS school opened in Uganda in 2008. Today, PEAS are **educating over 15,000 students** across 21 District, which amounts to over 1% of Ugandan secondary school pupils. Fondation Eagle has generously supported 14 PEAS schools in Uganda.

Our priority in Uganda is to support **each of our schools in becoming exemplar secondary schools**, positive beacons within the community and delivering quality teaching that transforms the lives of our students. We know that PEAS students arrive with worse grades than students at other schools, as PEAS schools have lower entry requirements than government and other private schools. By focusing on **developing our teachers** and **creating positive learning environments**, PEAS are supporting these students to catch up and outperform their peers in other schools. Some PEAS schools are achieving the highest results in their district.

In 2018, we received some compelling new impact data from a major evaluation of our programme in Uganda. The findings provide the strongest evidence we've had to date that **PEAS schools are achieving their mission in providing a high-quality, sustainable education to many disadvantaged students who would not otherwise be able to access secondary school**:



[You can watch a 5-minute summary video of the findings of the evaluation here.](#)



PEAS in Zambia

PEAS first identified Zambia as a country in need of increased access to secondary education in 2011. Today, **PEAS has four schools in Zambia**: two secondary schools in the Copperbelt Province and two in the Northern Province.

PEAS opened the first Copperbelt school in 2012, in the George compound, and the second opened in 2014, in the Kawama compound. Both schools serve **peri-urban communities** with large populations which **previously had no secondary schools**. Fondation Eagle has generously supported the construction of security fences at both schools.

These two PEAS schools have achieved success in the areas of access, quality and sustainability. In 2017, PEAS Zambia schools performed **better than the national average** in lower secondary examinations whilst **charging day fees that are 30% less** than those charged in nearby government schools¹. This is particularly impressive considering that PEAS schools have lower entry level requirements than government schools, and are more likely to cater for students from more challenging socio-economic backgrounds. These early successes were achieved despite a sub-optimal agreement between the Government of Zambia and PEAS.

In 2016, PEAS reached a **ground-breaking non-profit Public-Private Partnership agreement** with the Ministry of General Education of Zambia (MOGE), which sees the MOGE provide PEAS with a grant for each child educated at a partnership school. This partnership has enabled PEAS to open both new schools in Northern Province **completely free of day school fees** – which is unheard of in Zambia.



We have already seen landmark levels of equity thanks to this partnership. A demographic survey of PEAS Kampinda, opened in early 2018, revealed that **75% of students from PEAS Kampinda come from families living below the \$1.90 per day poverty line**. This is reflective of the rural surrounding areas, suggesting that offering zero fees is enabling everyone from the local community to access secondary education.

¹ Based on 2017 school fees - the two existing PEAS schools charge day fees, which include lunch, at approximately 70% of the fees charged by comparable schools nearby.

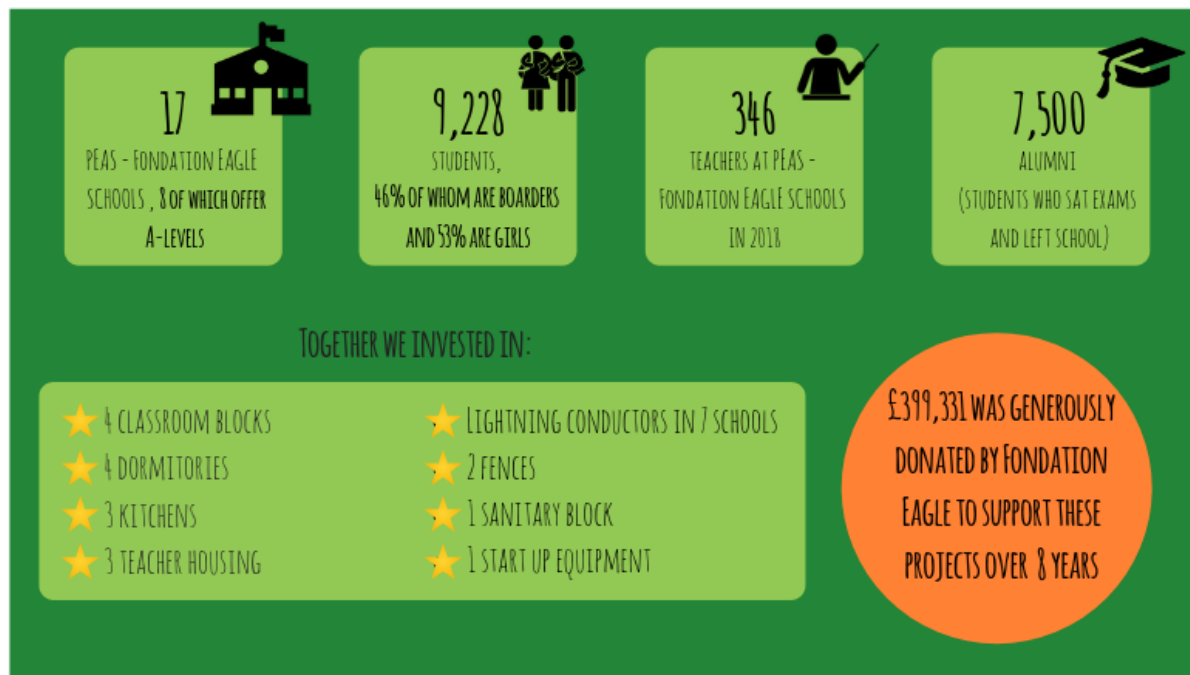


Fondation Eagle and PEAS

Since first partnering with PEAS in 2011, Fondation Eagle have funded projects at 17 PEAS schools in Uganda and two in Zambia – exactly half of the entire PEAS network. Your support has been fundamental to PEAS over the past 8 years, driving the growth of our schools and organisation, and transforming the lives of thousands of PEAS students. We would like to take this opportunity to once again thank you for your ongoing support, as we update you on the impact our collaboration has had on our students.



8 YEARS OF PARTNERSHIP





Fondation Eagle have been flexible in their support, responding to our most urgent needs in the both Uganda and Zambia. This has been particularly important to PEAS, as many other organisations are rigid in their funding, and is reflected in the range of projects Fondation Eagle have supported throughout the years:

Year of support	Reference	School name	Project
2011	FF 170	Kiira View	Sanitary Block
	FF 171	O&U	Kitchen
	FF 174	O&U, Kiira View, Sarah Ntiiro, Green Shoots, Lamwo, Pioneer, Hibiscus.	Lightning conductors
	FF 180 (A)	O&U	Dormitory
	FF 180 (B)	Kiira View	Dormitory
	FF 188	Kazingo	Start-up equipment
	FF 187	Green Shoots	Dormitory
	2012	FF 231	Bwesumbu
FF 232		Kithoma	Teacher Housing
2013	FF 280	Kazingo	Classroom block
	FF 281	Kichwamba	Classroom Block
	FF 282	O&U / Forest	Teacher Housing
2014	FF 316	Apeluai	Classroom block
	FF 317	Mukongoro	Classroom block
2015	FF 368	Green Shoots	Kitchen
	FF 369	Kiira View	Kitchen
2017	FF 434	Nyero	Dormitory
	FF 435	George	Security fences
	FF 439	Kawama	Security fences

More information on each of these schools can be found in the Appendix.



Correct provided by Foundation Eagle

The support provided has benefited these 17 PEAS in a variety of ways, from attracting and retaining students, building positive learning spaces and ensuring the safety of each and every student.

Dormitories

Boarding accommodation reduces the distance that students need to travel to reach school and supports more students to enrol in the school. Many parents, particularly of girls, have a strong preference for sending their children to boarding schools to ensure their safety and for a more conducive environment for them to succeed in their studies. Also, with more teachers staying onsite, it gives students an opportunity to make use of the facilities after the school day finishes, free of the need to do extensive household chores. PEAS also ensures each dormitory has lights, powered by either low-cost solar or hydro-electric power, which ensures students can continue reading after darkness – which falls very early in Uganda and Zambia.



Furthermore, dormitories also provide a valuable source of revenue for schools and therefore contribute towards school sustainability. Income from affordable boarding fees is used by schools to cross subsidise the cost of educating day scholars. Surpluses from each full boarding house, when fully enrolled, have the potential to cover approximately 10-12% of a school's entire budget each year. This represents an important revenue stream for schools and is core to ensuring the sustainability of the PEAS approach.

Throughout the years, Fondation Eagle has supported the construction of dormitories at four PEAS schools, enabling 240 additional students to stay on a PEAS campus. As PEAS buildings are built to a high quality and will last at least 25 years, these dormitories will house at least 1,500 students during the lifetime of the buildings.

Classroom block



Classroom blocks create new school places, enabling more children from the surrounding communities to continue their education. They are fundamental to the delivery of a quality education – without a classroom, there would be no classes.

The four classroom blocks generously provided by Fondation Eagle have provided essential new learning spaces, providing places for 240 new students each -960 in total -, supporting them as they further their secondary education. As all PEAS buildings are constructed to last for 25 years minimum, this means that each of the classroom blocks the Fondation invested in will provide secondary education to at least 1,500 children over the lifetime of the building.



Kitchen

PEAS provides a hot lunch to all students, and additional meals to boarders. For many day students, this is the only meal that they receive each day, so it is essential that it is filling, hot and nutritious.

Providing permanent kitchens has helped to improve the quality of meals and helps with the preparation of the large quantities of food required to cater for the whole school. As each kitchen is fitted with a fuel-efficient stove, this also helps to reduce the ongoing running cost of cooking and helps drive the school's sustainability in the long-term.

Providing a good meal to students helps to improve:

- **Health:** Many of our students suffer from poor nutrition and health concerns. Providing a healthy and filling lunch time meal promotes good general health, and provides students with the nutrients they might otherwise miss out on.
- **Learning outcomes:** A filling lunch time meal helps students focus and engage in afternoon lessons. Healthy children are also more likely to attend school regularly, which in turn drives student learning outcomes.

Since 2011, the Fondation funded the construction of kitchens at three PEAS schools equipped with a fuel-efficient stove. Today, the three kitchens built at PEAS Onwards and Upwards High School, PEAS Kiira View High School and PEAS Green Shoots High School are preparing lunch every day for 1,775 students, as well as breakfast and dinner for 603 boarding students.

Teacher Housing

PEAS believes great teaching is critical to students receiving a quality education. It is therefore vital that we are able to attract and retain the best teachers, which can be challenging in the extremely rural areas in which PEAS builds schools.

Providing on-site accommodation is an important part of employment for a teacher. At schools where there are no teacher houses, teachers tend to rent rooms in the nearest town, which is costly. In addition, PEAS schools are located in rural areas too far to walk to, which can mean hiring motorbike taxis at a considerable cost compared to their modest salaries.

In addition, having teachers housed on site helps ensure the safety and happiness of our students, and means teachers are around to provide additional support with revision, extra-curricular activities and counselling outside of school hours. This is critical when so many of our students join secondary school without basic literacy and numeracy skills, come from difficult backgrounds and are staying a long way from home.





Security Fence

Security fences around our schools are essential to keep our students safe and secure the school's infrastructure. This becomes increasingly important where PEAS students are staying in dormitories onsite, and discourages students from leaving the premises and skipping out of school.

Fondation Eagle funded security fences at two of our schools in Zambia, which was urgently required to keep our students safe.

Lightning conductors

Uganda has one of the highest incidences of lightning strike deaths in the world. Since 2011 in Uganda, it is estimated that hundreds of children have been killed or injured when lightning struck their schools². It is therefore crucial for PEAS to install lightning conductors on all applicable school buildings.

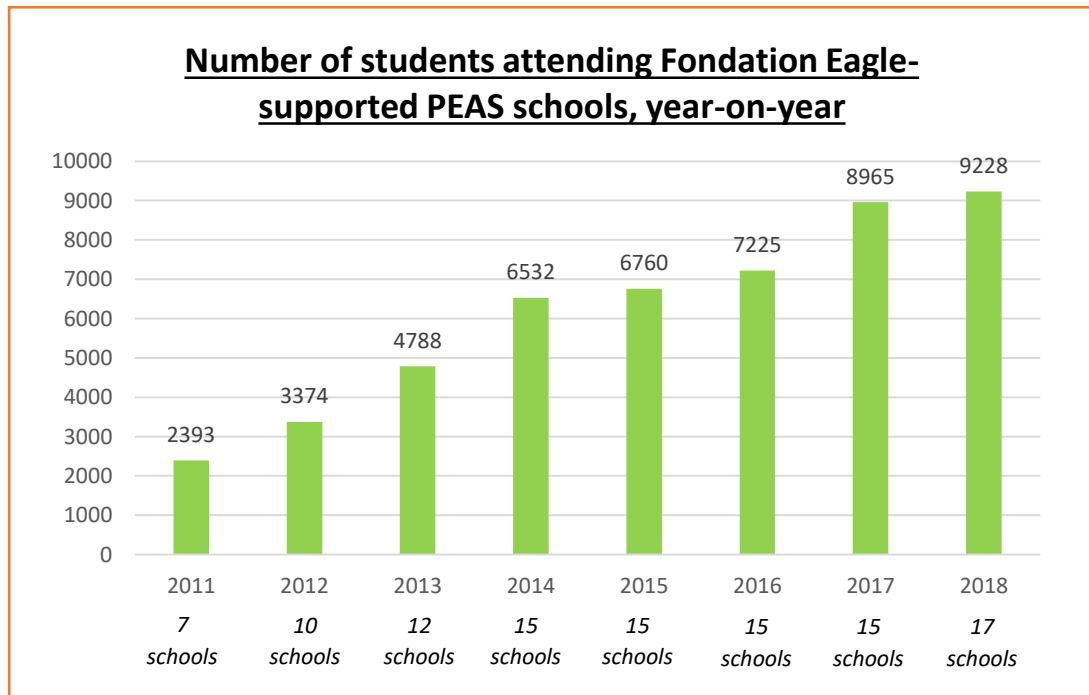
Fondation Eagle supported the installation of lightning conductors at seven of our schools in Uganda, helping us protect our students.

² <http://www.newvision.co.ug/news/640123-lightning-kills-200-pupils-more-in-danger.html>



Results

Fondation Eagle have supported half of PEAS' schools, which is has been incredibly important to PEAS. Each project has enabled us to provide an engaging and safe education to a growing number of children:



The graph above shows how many students were enrolled in schools that have been supported by Fondation Eagle at that point. For example, in 2011, Fondation Eagle first partnered with PEAS and funded projects at seven PEAS schools – with 2,393 attending those seven schools. By 2018, Fondation Eagle had funded projects at 17 PEAS schools over the years – with 9,228 students attending those seven schools in 2018.

This graph demonstrates that the support Fondation Eagle has provided to PEAS over the years is impacting the education of 9,228 students today, over half of all PEAS students – with many more students who will have been positively impacted in the past and have now completed their secondary education.



Thank you

Fondation Eagle and PEAS are successfully providing a life-changing, affordable, quality and sustainable education to thousands of children in Uganda and Zambia.

PEAS hopes you enjoyed reading this report and would once again like to thank Fondation Eagle for their continued and generous support. We welcome any feedback or discussion on anything mentioned.

For more information, please contact:

Emmi Matsunaga

PEAS Stewardship Lead

emmi.matsunaga@peas.org.uk

+44 (0)203 096 7700



Appendix A: PEAS schools supported by Fondation Eagle

PEAS O&U Secondary School



Year Founded: 2008
First received Fondation Eagle support: 2011
Enrolment when funding started: 555
Current enrolment: 888

PEAS Kiira View Secondary School



Year Founded: 2009
First received Fondation Eagle support: 2011
Enrolment when funding started: 275
Current enrolment: 457

PEAS Sarah Ntiiro Secondary School



Year Founded: 2009
First received Fondation Eagle support: 2011
Enrolment when funding started: 323
Current enrolment: 518

PEAS Green Shoots Secondary School



Year Founded: 2010
First received Fondation Eagle support: 2011
Enrolment when funding started: 578
Current enrolment: 474



PEAS Hibiscus High School



Year Founded: 2011
First received Fondation Eagle support: 2011
Enrolment when funding started: 376
Current enrolment: 719

PEAS Pioneer High School



Year Founded: 2011
First received Fondation Eagle support: 2011
Enrolment when funding started: 119
Current enrolment: 324

PEAS Lamwo Kuc Ki Gen High School



Year Founded: 2011
First received Fondation Eagle support: 2011
Enrolment when funding started: 168
Current enrolment: 291

PEAS Bwesumbu High School



Year Founded: 2012
First received Fondation Eagle support: 2011
Enrolment when funding started: 153
Current enrolment: 484



PEAS Kithoma High School



Year Founded: 2012
First received Fondation Eagle support: 2012
Enrolment when funding started: 259
Current enrolment: 450

PEAS Samling-Toro Kazingo High School



Year Founded: 2012
First received Fondation Eagle support: 2012
Enrolment when funding started: 117
Current enrolment: 637

PEAS Forest High School



Year Founded: 2008
First received Fondation Eagle support: 2013
Enrolment when funding started: 183
Current enrolment: 600

PEAS Samling Kichwamba High School



Year Founded: 2013
First received Fondation Eagle support: 2013
Enrolment when funding started: 101
Current enrolment: 627



PEAS Nyero High School



Year Founded: 2013
First received Fondation Eagle support: 2017
Enrolment when funding started: 610
Current enrolment: 664

PEAS Mukongoro High School



Year Founded: 2013
First received Fondation Eagle support: 2014
Enrolment when funding started: 649
Current enrolment: 805

PEAS Apelui High School



Year Founded: 2014
First received Fondation Eagle support: 2014
Enrolment when funding started: 375
Current enrolment: 331

PEAS George Secondary School



Year Founded: 2012
First received Fondation Eagle support: 2017
Enrolment when funding started: 330
Current enrolment: 348



PEAS Kawama Secondary School



Year Founded: 2014

First received Fondation Eagle support: 2017

Enrolment when funding started: 512

Current enrolment: 611