

eagle  
foundation



MEAK  
MEDICAL & EDUCATIONAL AID TO KENYA

## M.E.A.K - Report for Fondation Eagle: Nov. 2021 / Jan 2022

### MEAK Feeding Programme, Various locations Samburu County, Kenya

**Donor:**

Fondation Eagle, Switzerland

**Donor's reference:**

FF 0605 -2130

**Charity:**

Medical & Educational Aid to Kenya (UK)

**Date of acceptance:**

24<sup>th</sup> September 2021

**Date donation received:**

3<sup>rd</sup> October 2021

**Amount of Donation:**

£19,800.00 – ( using exchange rate of Ksh149 = £1, provides Ksh 2,950,000 )

**Duration of project:**

The project was completed in two separate locations, over 10 days

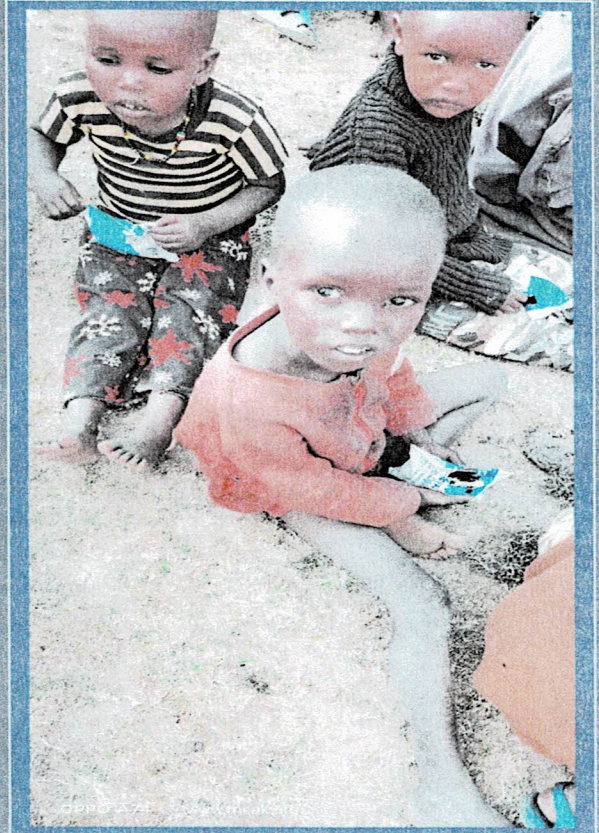
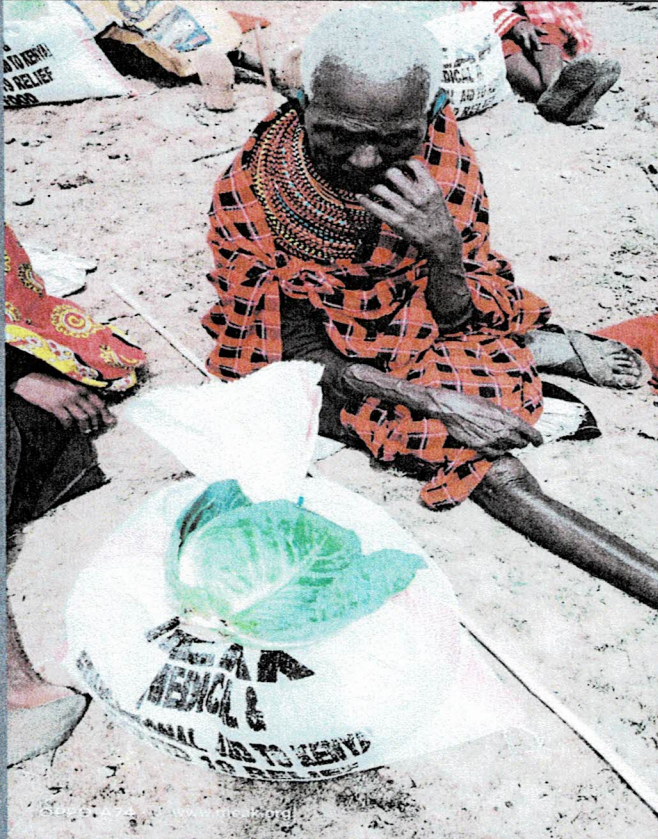
- 1<sup>st</sup> stage – 29 November 2021 – 3<sup>rd</sup> December 2021
- Second Stage – 10<sup>th</sup> January 2022 – 14<sup>th</sup> January 2022

**Estimated number of beneficiaries:**

A total of **1116 households** received foodstuffs., estimating at 6 persons per household , equates to 6696 individual recipients







# FEEDING REPORT FOR THE MONTH OF NOV, 2021/ JAN, 2022

**12TH & 13TH FEEDING PROGRAM MISSION AT SAMBURU COUNTY, TOTAL OF 16 SUCCESSFULLY COMPLETED MISSIONS**

The number of people battling acute hunger and suffering from malnutrition at Samburu County is on the rise yet again. In many villages, we still lack the ability to collect reliable and timely data to truly know the magnitude and severity of food crises gripping vulnerable populations. And the upheaval that has been set in motion by the new COVID-19 omicron variant may push even more families and communities into deeper distress. At this time of immense global challenges, from conflicts to climate shocks to economic instability, we must redouble our efforts to defeat hunger and malnutrition especially to this livestock-owning community. This is crucial for achieving the Sustainable Development Goals and building a more stable and resilient community. This report should be seen as a call to action and I commend its contents to a wide global audience.

PREPARED BY: ALEX M. THIRU

:PETER THEURI





Medical Education



Aid



Kenya

2021/22

**15<sup>TH</sup> & 16<sup>TH</sup> FEEDING PROGRAM REPORT AT MARALAL, SAMBURU COUNTY  
FOR LOCATIONS; SOIT PUS, LOLTOMIA, NGUSORO, LOONGURMAN, LOIKAS,  
NOMOTIO , LOWER MILIMANI AREA, LOKIRDINGAI, LKERURAI, LPERTPET,  
LKETURAI & LPUSI**

**DATE: NOVEMBER 2021 AND JANUARY 2022**

**DONORS: FOUNDATION EAGLE**

**NO. OF FAMILIES FED: NOVEMBER- 562**

**: JANUARY -554**

**TOTAL: 1,116 HOUSEHOLD**

**APPROXIMATELY 6,696 INDIVIDUALS**



**The project was completed in four separate locations, over a period of 10 days  
1<sup>st</sup> stage starting from; 29th November 2021 – 3rd December 2021 & the 2<sup>nd</sup> Stage  
starting from –10<sup>th</sup> January 2022 – 14<sup>th</sup> January 2022**





Medical Education

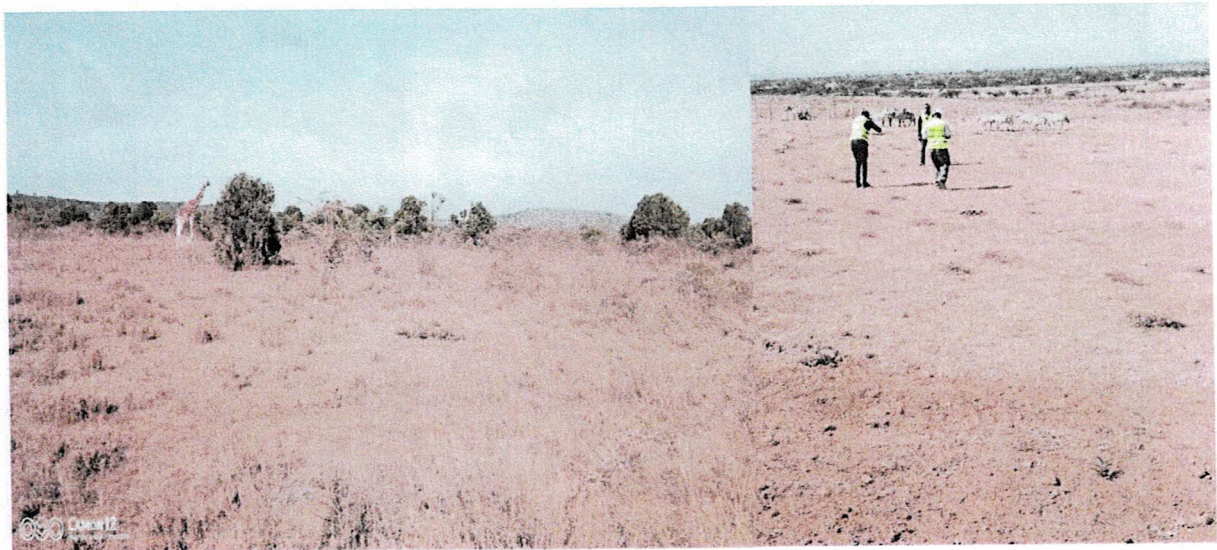


Aid



Kenya

2021/22



*Existing drought conditions at Samburu county*

### **PURCHASES**

From the attached invoices you will notice that there has been increase in prices of different commodities. Prices of items and commodities are not regulated by the government and cartels that import food commodities have taken advantage of the food market that has been affected by both drought and the global pandemic.



*Loading cabbages*





- Rice 3Kgs

**Removed**

- Soap 1Kg
- Cooking oil 1 Liter

*On January we;*

**Added**

- Cooking oil 1 Liter

**Decrease**

- Maize 12Kgs – 10 Kgs

**Constant**

- Tea leaves 250gms
- Salt 1 Kg
- Rice 3Kgs
- Beans 4 Kgs
- Porridge flour 5Kg
- Cabbages

**Removed**

- 250g tea leaves



*Casual helpers re-package the food.*

We also did away with construction of roofs where the money was directed to buying of food commodities specifically Cabbage which are compliments to cereals the



beneficiaries receives from the program; this was after we found that during the drought period food is more of a priority than construction of leaking roofs, blankets, maasai shuka and household utensils.

We have also reduced mask purchases by almost a half figure since we have always encouraged the locals to wear and wash our masks always.

**MISSION**



3 hr 13 min (179.7 km) via C77

  
[Directions](#)

Packaging of the food packs is done at a central store where it is done by seasoned casual assistants who the program has always sourced their service where they weigh and pack different food stuff in packaging bags to prevent them from mixing up and later pack them in one big sack. The whole process takes 2 days that sometimes it is not an 8 to 5 job with sometimes sacrificing more of their time for the benefit and service of fellow Kenyans which they do willingly and with great satisfaction.



*The teams having an early morning break en route on November*

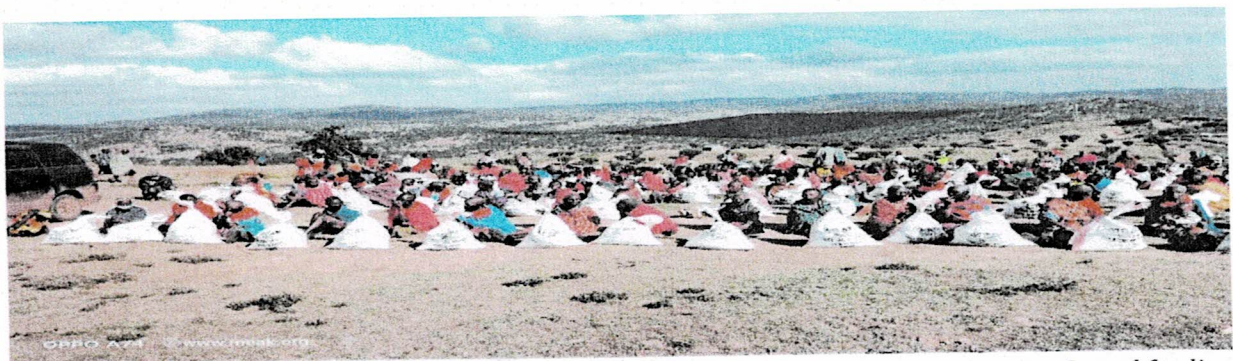




*Team after food distribution on January*

On the eve of departure the lorries arrive at the central store to be loaded by the casual assistants and stay at the same central store compound which is secure awaiting departure very early mostly around 3 am in the morning when the team depart for food distribution with breakfast stop-over along the way this is important because the team is able to arrive in Samburu early and start working saving on time and money.

On arrival we visit the communities where a government administrator that we inform prior to our visit who congregate beneficiaries at a convenient point to collect the food packages, making sure we follow government guidance and protocols on Covid 19.



*Crowd feeding*



*While asked who had received MEAK's food package, everybody rose the hand*



The beneficiaries are always pleased and full of joy and always insist that we should pray in their local dialect for the team before we start giving them food packs

Later they depart and the aged and disabled who are accompanied by relatives help them carry the food packs after singing and prayers

In some cases the team will do a door to door service for those that cannot reach to the convenient collection point and in other case we pay for motorbike taxi for those who come to proposed food collection points without helpers or relatives to help them carry the food packs.

**CHALLENGES**

Malnutrition and emaciated children – we experience a number of children crying and others collapse due to lack of energy. We have always mitigated this problem by the team sacrificing their take-away packed lunch to feeding these children. The team has also gone deeper into their pockets to contribute money for medication to those taken ill



Prices – With uncontrolled prices of commodities in Kenya, inflation rates, unbalanced trade and importation of some commodities like sugar, rice and maize due to drought there has been unpredictable prices in the market. But we try our level best to get accommodative prices.

Roads – Kenya’s road infrastructure is poor, especially in areas that the feeding program is done. This has an impact in the cost of transport and time consuming too.

Population –the number of people to feed rose exponentially due to more and more people being affected by the drought. It becomes a challenge on selecting the beneficiaries but we tried to mitigate this in some cases asking the young beneficiaries to





Medical Education



Aid

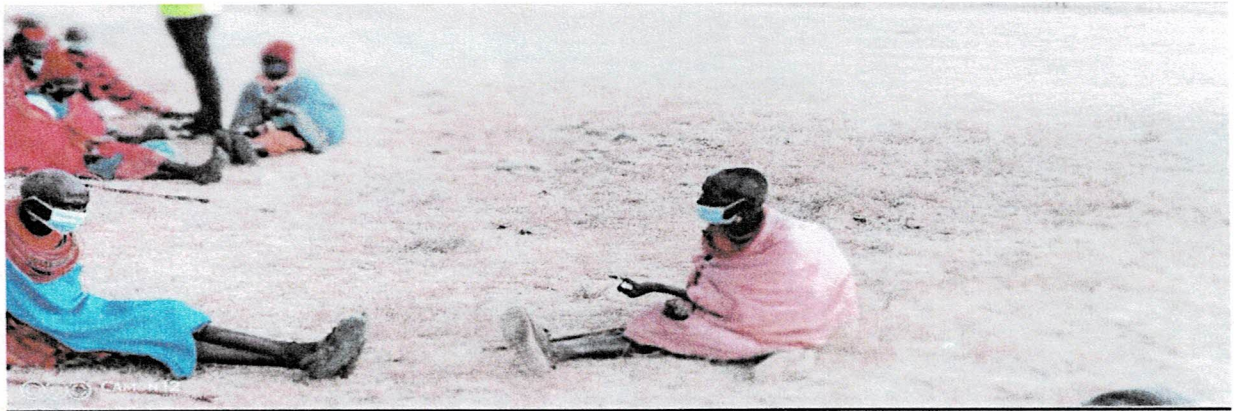


Kenya

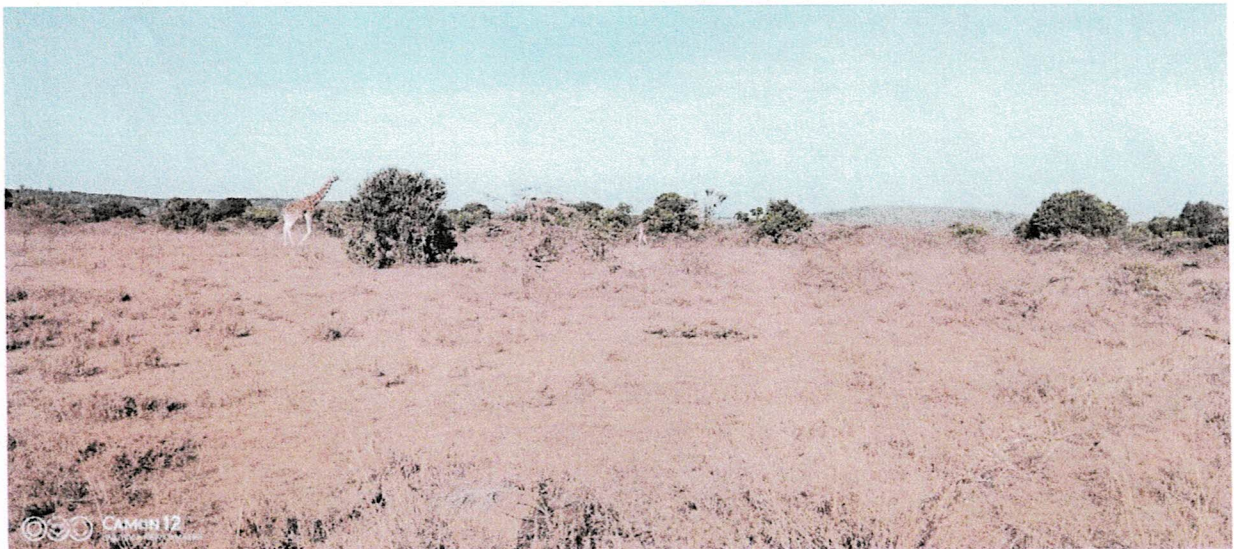
2021/22

at least share the food packs because they are still at least able to fend for themselves though not easy in places the organization visits but helps a lot

Persistent drought. The streamflow remains below the threshold for over a period of four months.



*The green grass is all faded*





**BUDGET**

## FEEDING BPROGRAM ACCOUNTS FOR NOVEMBER 2021

**Feeding Programme Accounts For November 2021- Maralal**

Folio No.	Quantity	Type	Description	Price Ksh	Total Ksh
1	28	cartons	packets Kenya salt x 20	630	17,640
2	25	sacks	90 kgs Beans	7,200	180,000
3	32	sacks	90 kgs Millet porridge	9,200	294,400
4	75	sacks	90 kgs maize	3,500	262,500
5	800	pieces	washable face masks	65	52,000
6	12	sacks	50 kgs sugar	6,600	79,200
7	68	sacks	25 kgs rice	2,400	163,200
8	14	cartons	Eden tea x 40 packets	4,050	56,700
9	800	heads	Cabbages	60	48,000
10 to 18	Miscellaneous purchases as per separate sheet provided to include labour for weighing, packing and loading sacks and bags of individual foodstuffs - sanitizer spray & bottled water - car fuel - packaging bags and printing - hire of two lorries -Accomodation & meals for helpers,gratitudes and aid, all as receipts provided				317,200
				<b>Total</b>	<b>1,470,840</b>



**BUDGET**

FEEDING BPROGRAM ACCOUNTS FOR JANUARY 2022

**ing Programme Accounts For JANUARY 2022- Maralal**

Quantity	Type	Description	Price Ksh	Total Ksh
28	cartons	packets Kenya salt x 20	620	17,360
25	sacks	90 kgs Beans	7,200	180,000
31	sacks	90 kgs Millet porridge	9,200	285,200
62	sacks	90 kgs maize	3,500	217,000
600	pieces	washable face masks	65	39,000
11	sacks	50 kgs sugar	6,500	71,500
67	sacks	25 kgs rice	2,430	162,810
47	cartons	Cooking oil	3,300	155,100
800	heads	Cabbages	60	48,000
Miscellaneous purchases as per seperate sheet provided to include labour for weighing, packing and loading sacks and bags of individual foodstuffs - sanitizer spray & bottled water - car fuel - packaging bags and printing - hire of two lorries -Accomodation & meals for helpers,gratitudes and aid, all as receipts provided				308,700
			<b>Total</b>	<b>1,484,670</b>





Medical



Education



Aid



Kenya

2021/22

---

## **CONCLUSIONS**

We wish to thank Foundation Eagle for the generous grant that has enabled the provision of food packages to the very needy and less fortunate Kenyan families whose lives have been so severely impacted by Covid-19 & the extreme or diverse weather condition.

I can't tell you how much satisfaction we feel after feeding them. The blessings they shower on us are the only objective for us. I would like to suggest that you can also come with us to serve the food to them for you have earned the blessings of a million people around the world

Thank you again for your generous support.